

THE REVIVAL STARTS HERE

# LLANDOW

REVIVAL SERIES 2026

HOSTED BY **MAINDY FLYERS**

## RACE PROGRAMME

ROUND 3

Wed 17th June 2026



Llandow Revival Series  
WhatsApp group



WhatsApp Broadcast Group

Sponsored by

**UPRISE**

BIKES

# CLUB WELCOME

We are proud to be bringing racing back to Llandow. The first two rounds of the Llandow Revival Series have been a huge success, attracting more than 160 youth and adult riders and creating a fantastic atmosphere across both circuits. The support from riders, families, clubs and volunteers has shown exactly what is possible when the cycling community gets behind grassroots racing in South Wales.

For a long time, South Wales has lacked regular closed-circuit racing opportunities, and Llandow has been missing from the calendar. This six-round series is an opportunity to change that. The series remains very much a test to demonstrate demand and show that regular racing can once again be delivered successfully at Llandow. Continued support from riders, families and clubs will help create the opportunity for something much bigger and more sustainable in the future.

Round 3 takes place this Wednesday and marks the halfway point of the series. Whether you have raced the opening rounds or are considering your first visit to Llandow this year, we would encourage you to get involved and support the return of regular circuit racing in Wales.

As this is still the first year of a brand-new series, timings may occasionally need to be adjusted depending on field sizes and race progression. We appreciate the patience and support of riders and families as we continue to develop and improve the format.

Two circuits will be used across the venue. Under 8, Under 10 and Under 12 riders will race on the technical 1km karting circuit, while Under 14 riders and above will race on the 1.4km main motor circuit.

Huge thanks go to our volunteers, commissaires, marshals, sponsors and supporters who have made the return of racing to Llandow possible, especially Uprise Bikes and our other partners whose support helps underwrite the cost of delivering both the race series and wider rider development opportunities.

Most importantly, thank you to the riders, parents and families. Your support is what keeps grassroots racing alive.

**Mike Richards**  
**Chair**  
**Maindy Flyers Cycling Club**



# EVENT INFORMATION

**Venue:** Llandow Motor Circuit, Llandow, Cowbridge, CF71 7PB.

**Date:** Wednesday 20<sup>th</sup> May 2026

**Organiser:** Nye Jayne, Maindy Flyers Cycling Club

**British Cycling Commissaires:** Rob Warren

**First Aid:** EMW & Training

**Safeguarding and Welfare Officer:** Angharad Linnett

**Timing:** Richard Hopkins

**Marshals:** Maindy Flyers Club Volunteers

**WhatsApp Broadcast Group:** Our WhatsApp Broadcast Group is intended to share important updates. It is one-way communication only. **Strictly for participants aged 18 and over.** Others may see your phone number and profile picture.

## SAFEGUARDING

This event is run under the rules and safeguarding policies of British Cycling.

Photography may take place during the event including racing and podium presentations.

If you do not wish your child to be photographed, please notify the event organiser or safeguarding lead before racing and make this known at sign-on.

Please be mindful when posting photographs of other children on social media, as some families may not have provided photo consent.

Any safeguarding concerns should be reported immediately to the Event Welfare Officer or a Commissaire.



# VENUE INFORMATION

## Car Parking

All event parking is adjacent to the karting circuit.

Please follow event signage and marshal instructions on arrival. Drive past the café building (on your right) and turn right into the designated parking area.

Please park considerately and leave clear access for emergency vehicles, officials and riders moving between the two circuits.

## Facilities

Toilets are located adjacent to the main circuit sign-on building.

Please use facilities responsibly and leave them clean for other users.

First Aid is located at the main circuit and clearly marked on the venue map.

Spectator viewing areas are located along the main straight and designated viewing zones shown on the venue map.

Please remain in spectator areas and do not enter restricted zones unless authorised by event staff.

## Rider Movement

Riding in paddock area is permitted for warm up, however riders must do so carefully and respectfully at all times.



# SITE MAP



Please follow event signage and marshal instructions on arrival. Drive past the café building (on your right) and turn right into the designated parking area overlooking the karting circuit.

Please park considerately and leave clear access for emergency vehicles, officials and riders moving between the two circuits.

There will be no access to the area marked in red. This is reserved for rider warm up. Entrance to the main circuit is via a pedestrian gate.



# SITE INFORMATION



Please enter the main circuit via the pedestrian gate.



Strictly no vehicle access. This area is reserved for rider warm up.



# SITE INFORMATION



U14/16/Adult Sign On  
Adjacent to Main Circuit



U8/10/12 Sign On  
Adjacent to Karting Circuit



# ENTRY INFORMATION

Limited entry on the day may be available only if there is space remaining in the relevant race category.

For riders wishing to enter on the day, there is a strict requirement that sign-on and payment must be completed **no later than 30 minutes before their scheduled race start time.**

Any rider arriving later than this will not be permitted to race.

Adult rider registration opens from 6:00pm and closes 30 minutes before race time.

Under 14 and Under 16 rider registration opens from 5:30pm and closes at 5:50pm.

Under 8, Under 10 and Under 12 riders may sign on from 5:30pm at the karting circuit registration area.

All riders must collect their race number and complete sign-on before racing.

League registration for overall standings is a separate £5 one-off fee.

All youth riders remain subject to British Cycling gear restrictions and bikes may be checked before races.

All races are run under British Cycling rules and regulations.

# RACE NUMBERS & TIMING CHIPS

All riders must collect their race number before racing.

Timing chips must be fitted securely to the bike fork as directed by event staff.

Please return race numbers and timing chips immediately after racing.

A non-returned timing chip will incur a replacement charge of £60.



# TECHNICAL REGULATIONS

Under 8 / U10 / U12 riders on the karting circuit are Go-Ride format with no gear check requirement.

For all other youth age categories, please make sure that rider's bikes adhere to the British Cycling age-specific gear restrictions:

CATEGORY	ROAD RACING
Youth A	7.18 metres
Youth B	6.73 metres
Youth C	6.34 metres
Youth D	Unrestricted
Youth E	Unrestricted

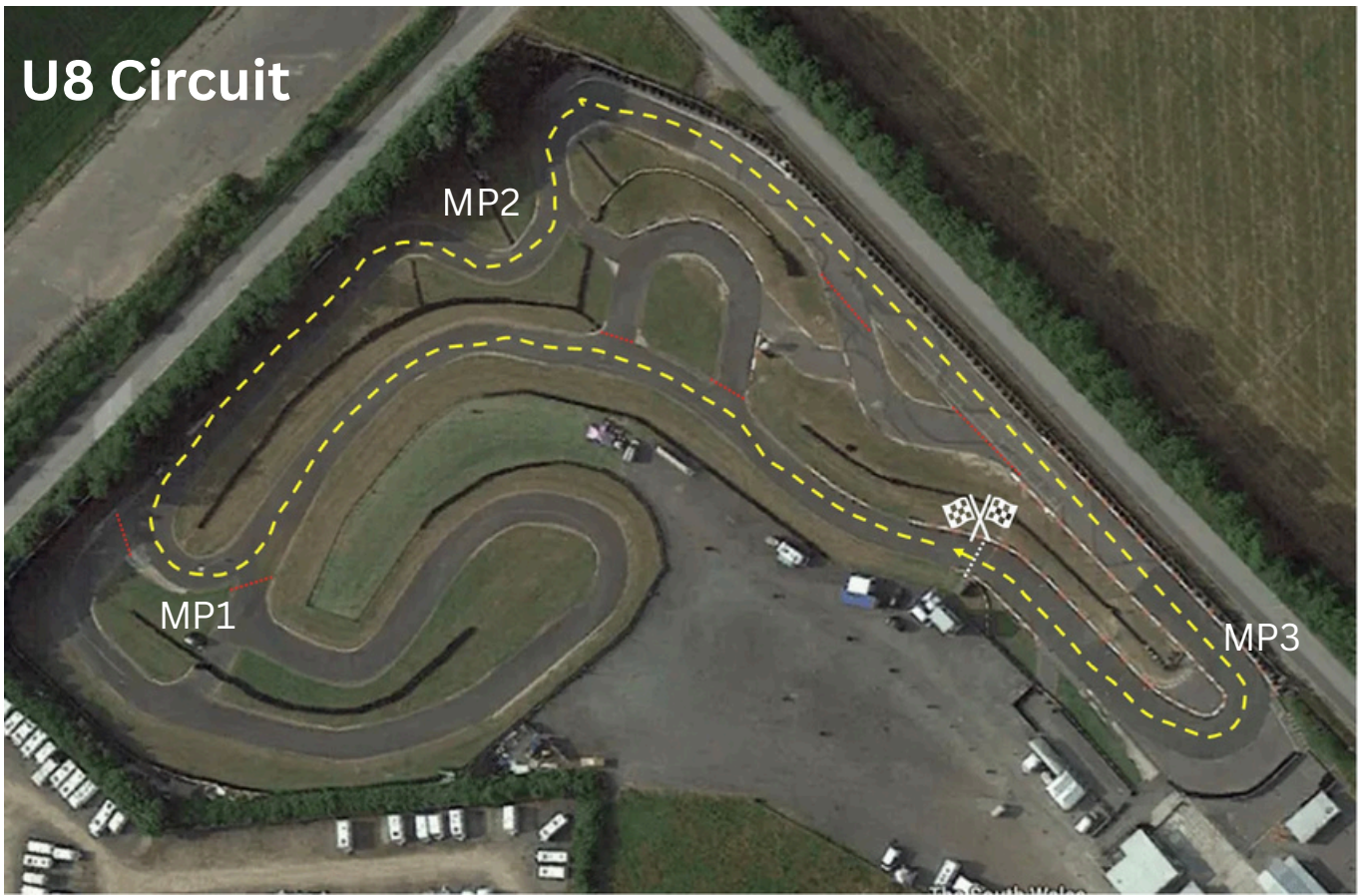
## Equipment Rules

- No TT bars or time trial extensions
- No aero helmets
- Handlebars must be plugged
- Equipment must be safe and race legal
- Commissaires may carry out random checks before or after races

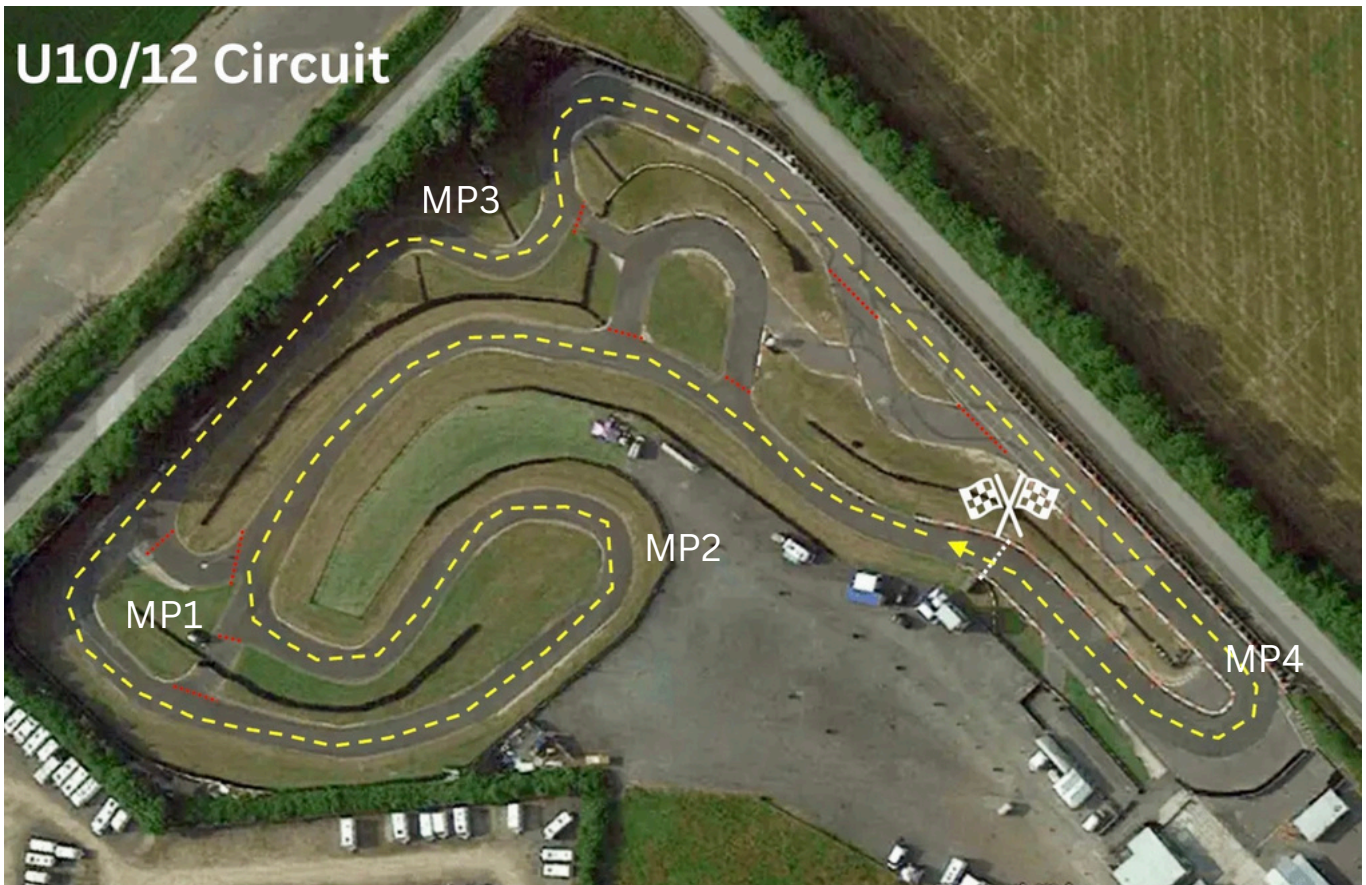


# CIRCUITS

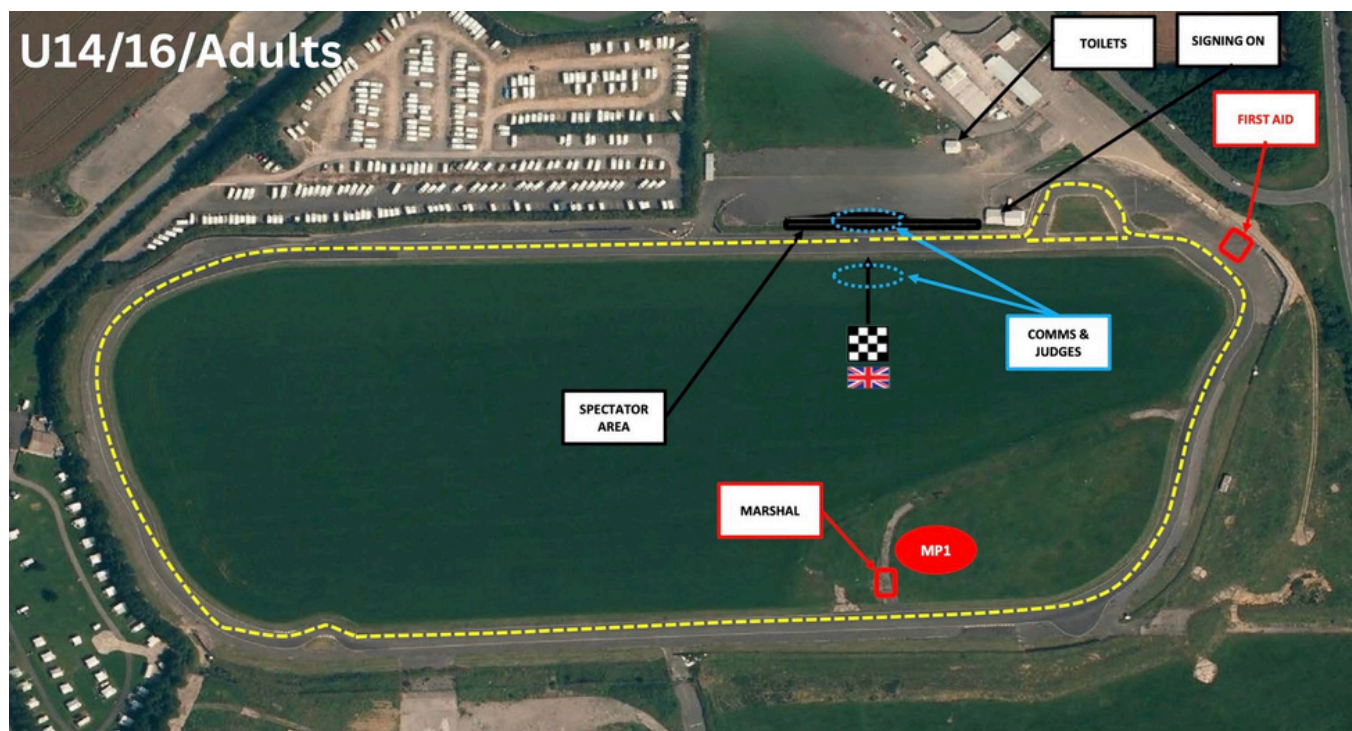
## U8 Circuit



## U10/12 Circuit



# CIRCUITS



The circuit may be used in either direction, however if used in the anti clockwise direction (as viewed from above), the chicane close to the finish will not be included.



# RACE SCHEDULE

## U8/10/12: Karting Circuit (Go Ride Format)

This is a brand new race format and the first time this structure has been delivered at Llandow Motor Circuit.

Please be patient with start times and race durations as we establish the series. Timings may move slightly depending on field sizes, race progression and daylight restrictions.

Our priority is to deliver safe, fair and enjoyable racing for all riders.

Time	Event	Duration
17:30	Registration open for U8s/U10s/U12s	
17:50	Course practice for U8s/U10s/U12s	10 mins
18:00	<b>Race 1:</b> U8 (Youth E) Girls & Open	10 mins
18:15	<b>Race 2:</b> U10 (Youth D) Girls & Open	15 mins
18:35	<b>Race 3:</b> U12 (Youth C) Girls & Open	20 mins

Podiums for U8/10/12 immediately following U12 race



# RACE SCHEDULE

## U14/16/Adult Races

This is a brand new race format and the first time this structure has been delivered at Llandow Motor Circuit.

Please be patient with start times and race durations as we establish the series. Timings may move slightly depending on field sizes, race progression and daylight restrictions.

Our priority is to deliver safe, fair and enjoyable racing for all riders.

Time	Event	Duration
17:30	Registration open for U14/16 only	
17:45	Course sighting laps for U14/16 only	10 mins
17:55	<b>Race 4:</b> U14 (Youth B) / U16 (Youth A) Girls & Open	30 mins
18:00	Registration open for adults.	
18:30	<b>Race 6:</b> Open & Women Cat 4 Only	40 mins
19:15	<b>Race 7:</b> Women Cat 2/3/4	40 mins
19:15	<b>Race 8:</b> Open Cat 2/3/4	40 mins

**Podiums for U14/16 & adults will take place at 20:00**

# LLANDOW REVIVAL SERIES LEAGUE

## Format & Eligibility

The Llandow Revival Series League will consist of 6 rounds held at Llandow Circuit.

To be included in the overall League standings, riders must:

- Register for the League (£5 one-off fee)
- Compete in a minimum of 4 rounds
- Race within their correct British Cycling category

Only riders registered for the League will be eligible to score points towards the overall standings.

Separate league standings will be maintained for each race category (youth age groups and adult race categories).

## Scoring System

Each rider's best 4 results from 6 rounds will count towards the overall league standings. Points will be awarded as follows:

- 1st – 100 points
- 2nd – 99 points
- 3rd – 98 points
- Continuing to decrease by 1 point per position
- All finishers will receive points

Riders must complete a minimum of 4 rounds to be eligible for final league awards.

## Tie-Break (Countback)

In the event of a tie on points, the following countback system will be applied:

- Number of 1st place finishes
- If still tied, number of 2nd place finishes
- Then 3rd places, and so on through all finishing positions

If riders remain tied after countback, the result from the final round will determine the overall placing

## Final Awards

- Overall awards will be presented to the top 3 riders in each category
- Final standings will be based on each rider's best 4 results across the series
- Presentations will take place after the final round



# EVENT SPONSORS

The Llandow Revival Race Series would not be possible without the generous support of our sponsors and partners.

Their support helps underwrite the costs of bringing closed-circuit racing back to Llandow and gives riders across South Wales and beyond the chance to race in a safe, exciting and professionally run environment.

We extend our sincere thanks to:

- Uprise Bikes (Title Sponsor)
- Pinarello
- Synergy Performance
- Cwmtillery Glass Centre
- Ride Bike Wales
- Sporta Bike+
- Tiny Rebel Brewery
- Tyre Glider
- Bonked Prints
- BAM

We are incredibly grateful for your support of grassroots cycling and the future of racing in Wales.

A final thank you also goes to our volunteers, commissaires, marshals, first aid team, timing team, parents and riders.

Without you, racing simply would not happen.

